



Slide-On BMA Jack 2 Hole Flange to SMA Male
Cable 150 cm Using RG402 Coax

RF Cable Assemblies Technical Data Sheet

PE3W08629-150CM

Configuration

- Connector 1: Slide-OnBMA Jack 2 Hole Flange
- Connector 2: SMA Male
- Cable Type: RG402

Features

- Max Frequency 18 GHz
- 69.5% Phase Velocity

Applications

- General Purpose
- Laboratory Use

Description

Pasternack's PE3W08629-150CM BMA jack slide-on 2 hole flange to SMA male 150 cm cable using RG402 coax is part of our full line of RF components available for same-day shipping. Pasternack's semi-rigid RF cable assemblies are ideal for high performance applications and can be formed, using proper tooling, to the routing pattern required. This Pasternack BMA to SMA cable assembly has a jack to male gender configuration with 50 ohm semi-rigid RG402 coax. The PE3W08629-150CM BMA jack to SMA male cable assembly operates to 18 GHz. Our RF cable assembly with BMA 2 hole flange interface allows designers to create external connections on their product enclosures, and can be used in a variety of other rack mount and panel mount applications.

Custom versions of most RF cable assemblies can be built and shipped same day. Custom cable assembly lengths can be obtained by specifying the desired length on the web site at time of order or by contacting a sales representative. Other available RF cable assembly value added services include connector orientation or clocking, heat shrink booting and custom labeling. RF testing can also be performed to document the electrical performance of your cable assembly.

Electrical Specifications

Description	Minimum	Typical	Maximum	Units
Frequency Range	DC		18	GHz
VSWR			1.4:1	
Velocity of Propagation		69.5		%

Specifications by Frequency

Description	F1	F2	F3	F4	F5	Units
Frequency	1	2	4.5	9	18	GHz
Insertion Loss (Max.)	0.68	0.91	1.45	2.18	3.36	dB

Electrical Specification Notes:

Click the following link (or enter part number in "SEARCH" on website) to obtain additional part information including price, inventory and certifications: [Slide-On BMA Jack 2 Hole Flange to SMA Male Cable 150 cm Using RG402 Coax PE3W08629-150CM](#)



Slide-On BMA Jack 2 Hole Flange to SMA Male Cable 150 cm Using RG402 Coax

RF Cable Assemblies Technical Data Sheet

PE3W08629-150CM

The Insertion Loss data above is based on the performance specifications of the coax cable and connectors used in this assembly. The Insertion Loss is estimated as $0.03 \cdot \sqrt{\text{FGHz}}$ dB per BMA jack connector and 0.1 dB per SMA male connector.

Mechanical Specifications

Cable Assembly

Length* 59.05 in [149.99 cm]
Diameter 0.74 in [18.8 mm]

Cable

Cable Type RG402
Impedance 50 Ohms
Inner Conductor Type Solid
Inner Conductor Material and Plating Copper Clad Steel, Silver
Dielectric Type PTFE
Number of Shields 1
Outer Conductor Material and Plating Copper

Repeated Minimum Bend Radius 0.25 in [6.35 mm]

Connectors

Description	Connector 1	Connector 2
Type	BMA Jack 2 Hole Flange	SMA Male
Specification		MIL-STD-348A
Impedance	50 Ohms	50 Ohms
Connection Method	Slide-On	
Mating Cycles	1,000	
Contact Material and Plating	Beryllium Copper, Gold	Brass, Gold
Contact Plating Specification	51.18μ in. minimum	50 μin minimum
Dielectric Type	PTFE	PTFE
Outer Conductor Material and Plating	Beryllium Copper, Gold	Stainless Steel, Gold
Outer Conductor Plating Specification		10 μin minimum
Body Material and Plating	Stainless Steel, Gold	Stainless Steel, Gold
Body Plating Specification	19.68μ in. minimum	10 μin minimum
Coupling Nut Material and Plating		Brass, Nickel
Coupling Nut Plating Specification		100 μin minimum
Hex Size		5/16 inch
Torque		3 in-lbs [0.34 Nm]
Seal Gasket Material		Silicone

Click the following link (or enter part number in "SEARCH" on website) to obtain additional part information including price, inventory and certifications: [Slide-On BMA Jack 2 Hole Flange to SMA Male Cable 150 cm Using RG402 Coax PE3W08629-150CM](#)



Slide-On BMA Jack 2 Hole Flange to SMA Male Cable 150 cm Using RG402 Coax

RF Cable Assemblies Technical Data Sheet

PE3W08629-150CM

Environmental Specifications

Temperature

Operating Range

-40 to +100 deg C

Compliance Certifications (see [product page](#) for current document)

Plotted and Other Data

Notes:

How to Order

Part Number Configuration:

PE3W08629

- **xx**

uu

Unit of Measure:
cm = Centimeters
<blank> = Inches
Length
Base Number

Example: PE3W08629-12 = 12 inches long cable
PE3W08629-100cm = 100 cm long cable

Slide-On BMA Jack 2 Hole Flange to SMA Male Cable 150 cm Using RG402 Coax from Pasternack Enterprises has same day shipment for domestic and International orders. Our RF, microwave and millimeter wave products maintain a 99.4% availability and are part of the broadest selection in the industry.

Click the following link (or enter part number in "SEARCH" on website) to obtain additional part information including price, inventory and certifications: [Slide-On BMA Jack 2 Hole Flange to SMA Male Cable 150 cm Using RG402 Coax PE3W08629-150CM](#)

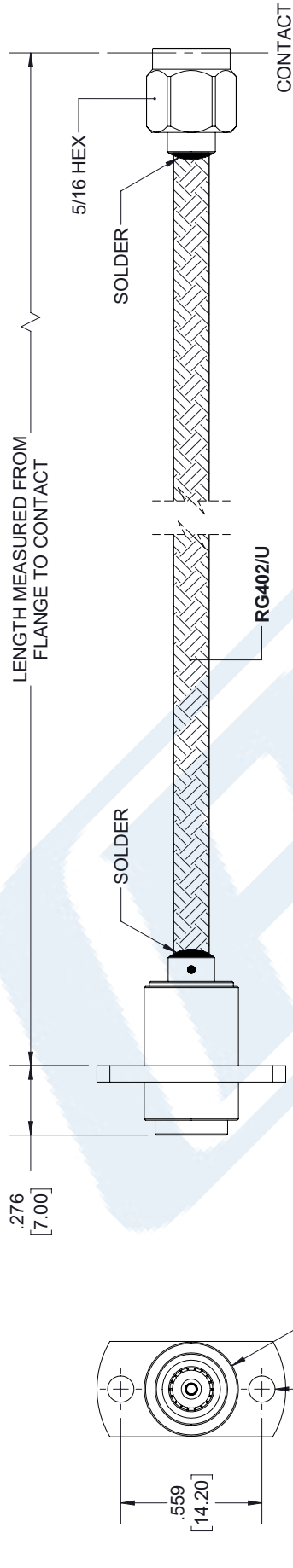
URL: <https://www.pasternack.com/bma-jack-sma-male-rg402u-cable-assembly-pe3w08629-150cm-p.aspx>

The information contained in this document is accurate to the best of our knowledge and representative of the part described herein. It may be necessary to make modifications to the part and/or the documentation of the part, in order to implement improvements. Pasternack reserves the right to make such changes as required. Unless otherwise stated, all specifications are nominal. Pasternack does not make any representation or warranty regarding the suitability of the part described herein for any particular purpose, and Pasternack does not assume any liability arising out of the use of any part or documentation.

PE3W08629-150CM CAD Drawing

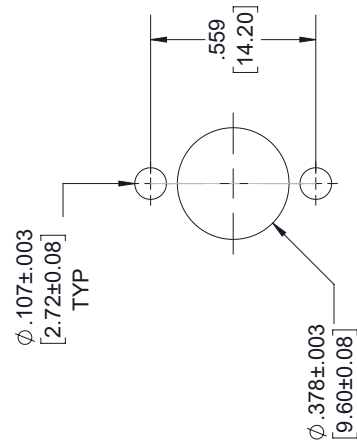
Slide-On BMA Jack 2 Hole Flange to SMA Male Cable 150 cm Using RG402 Coax

REVISIONS			
REV.	DESCRIPTION	DATE	APPROVED
A	INITIAL RELEASE	1/29/2020	S.ELLIS



BMA JACK
2 HOLE FLANGE

SMA MALE



UNLESS OTHERWISE SPECIFIED LEADING DIMENSIONS ARE INCHES DIMENSIONS IN [] ARE MILLIMETERS	
TOLERANCES:	FRACTIONS
.X = \pm .2	[.08]
.XX = \pm .02	[.51]
.XXX = \pm .005	[.13]
CABLE LENGTH (L) TOLERANCES:	ANGLES \pm 1°
L \leq 12 [305]	= +1 [25] / -0
12 [305] < L \leq 60 [1524]	= +2 [51] / -0
60 [1524] < L \leq 120 [3048]	= +4 [102] / -0
120 [3048] < L \leq 300 [7620]	= +6 [152] / -0
300 [7620] < L	= +5% L / -0
ALL DIMENSIONS SHOWN ARE FOR REFERENCE ONLY.	

PE PASTERNAK an INFINITI brand Pasternack Enterprises, Inc. P.O. Box 16759, Irvine, CA 92623. Phone: 1.949.261.1920 1.866.727.8376 Fax: 1.949.261.7451 Website: www.pasternack.com E-mail: sales@pasternack.com	
SIZE	53919
CAGE CODE	K.DANG
DRAWN BY	ITEM NO.
A	PE3W08629
REV	A

THIRD-ANGLE PROJECTION THE INFORMATION AND DESIGN IN THIS DOCUMENT IS THE PROPERTY OF PASTERNAK CORPORATION ALL RIGHTS RESERVED.	
SHEET	1 OF 1
SCALE	N/A

THESE COMMODITIES, TECHNOLOGY OR SOFTWARE WERE EXPORTED FROM THE UNITED STATES IN ACCORDANCE WITH THE EXPORT ADMINISTRATION REGULATIONS. DIVERSION CONTRARY TO U.S. LAW PROHIBITED.